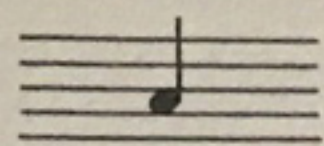


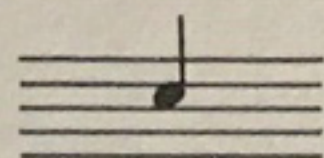
Ausführungsbezeichnungen / Notation for methods of playing

Anschlagstellen / points of impact

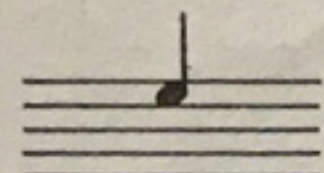
a) Fellmitte
centre of head



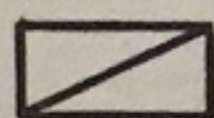
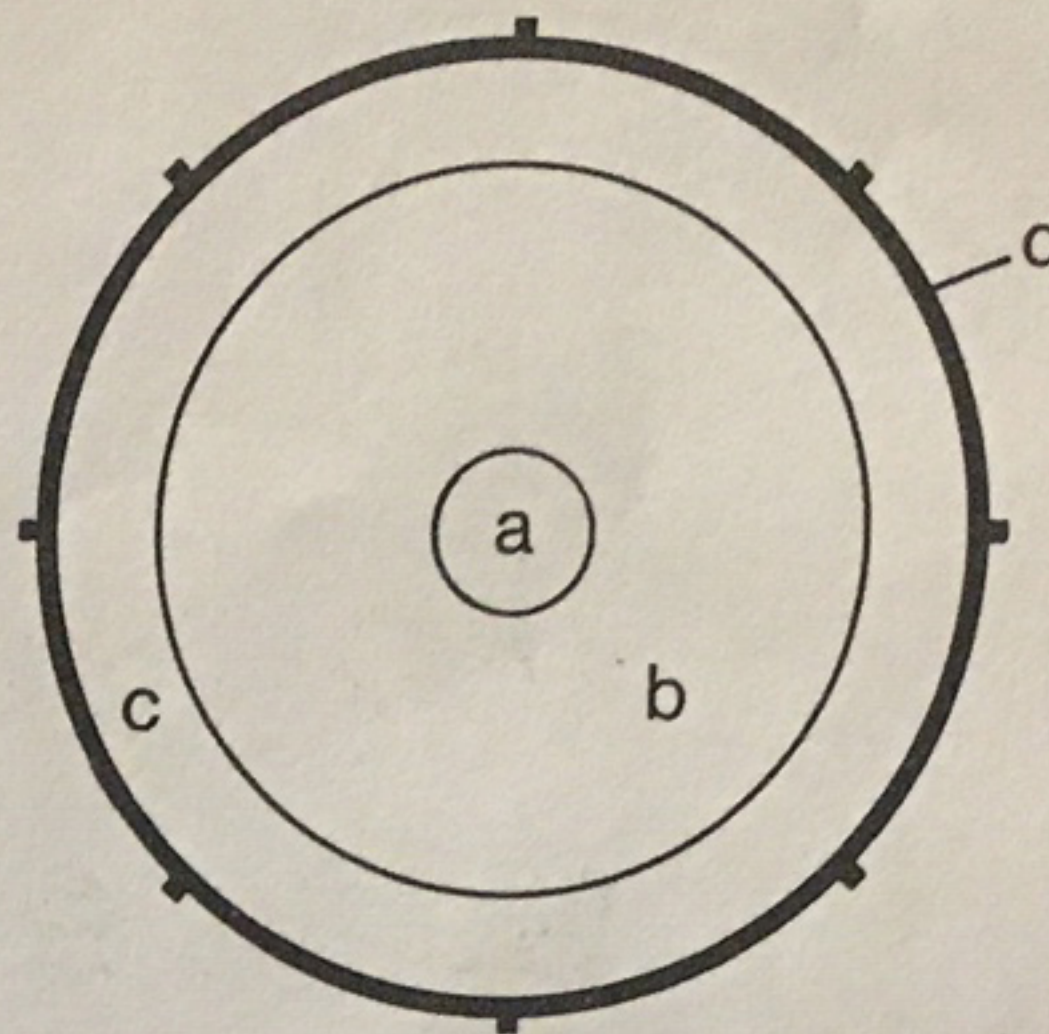
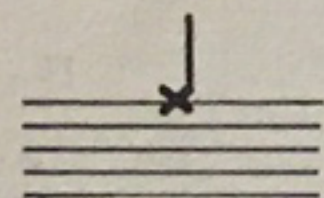
b) Zwischenraum
interval



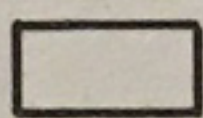
c) Fellrand
rim area



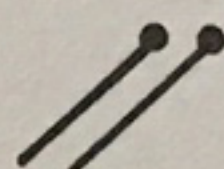
d) Spannreifen
on rim



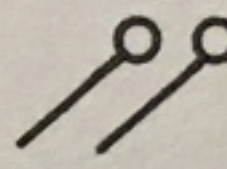
mit Saiten
snares on



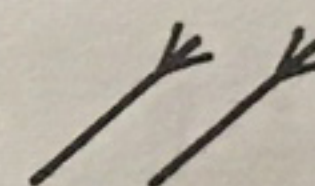
ohne Saiten
snares off



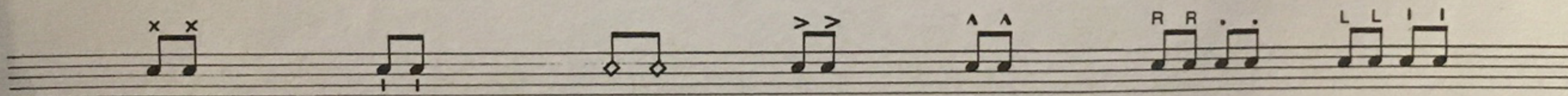
Trommelschlägel
snaredrum sticks



Tomtom
tomtom



Besen
brushes



Stock auf Stock
stick on stick

aufgelegter Stock
stick across rim

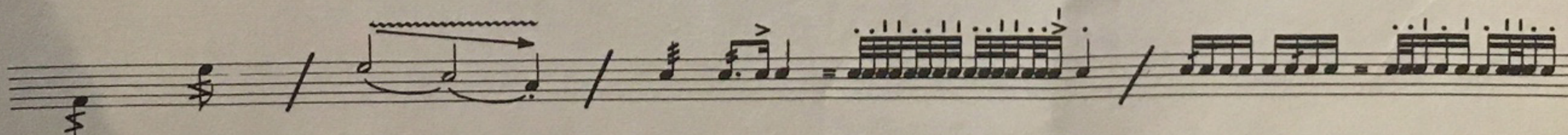
Randschlag
rimshot

Akzent
accent

Doppelakzent
stronger accent

rechte Hand
right hand

linke Hand
left hand



Besen
wischen
brushed

Press-
wirbel
press roll

vom Fellrand zur Mitte
from edge to centre

Notation = Ausführung - Sprungschläge
notation = execution - rebound strokes